

mehr, khalapur

Krishnan Parvez Architects > Projects > All > Favorites > mehr, khalapur

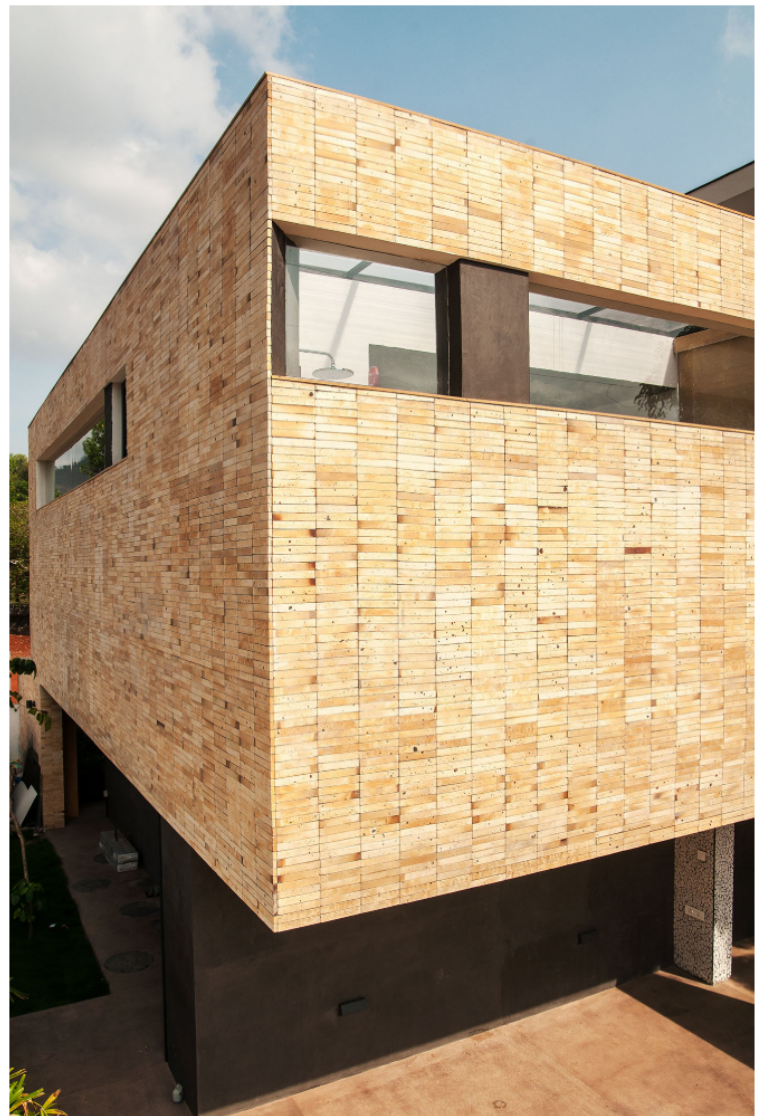
MEHR

Weekend retreat - Mr. Vineet Bhatnagar

Part of a gated community, proximity to kalote lake, in serene village surroundings, the house called for a contemporary rural weekend retreat feel. Conceptually, the layout and the materials fulfilled these conditions. Large volumes, natural stones, breezy ventilated indoors, graphic openable screens, vistas to the scenic surrounding, maintenance free finishes and art sensitive interiors enveloped the design of the house. On a tight plot, the house was laid out to use every open space as verandas and service courts. The lower level housed the living, dining, kitchen, staff quarters and 2 guest bedrooms. The private bedrooms in the upper level could overlook the central living volume. Large pivoted screen panels allow play of light in the bedrooms. Commissioned art in the master bedroom essays the story of the clients family. Fire bricks, lime plaster, in-situ cement mosaic and the brown stone echo hues of the natural context.

Scale

7,000 sq.ft.



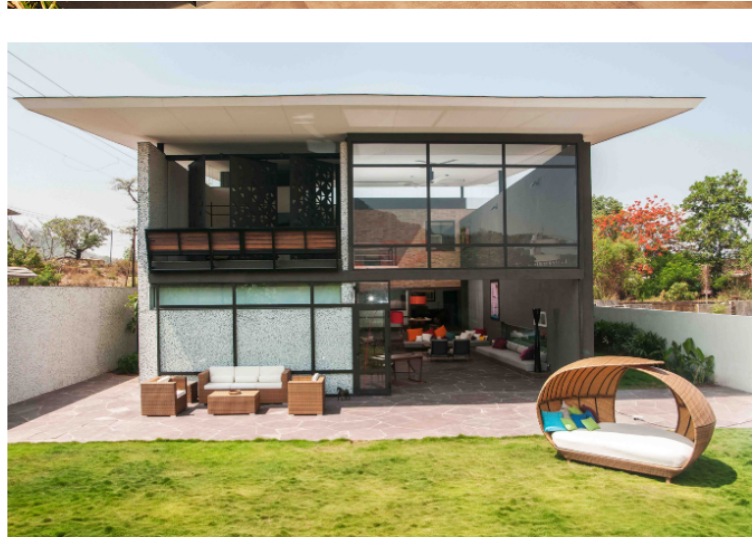
Status

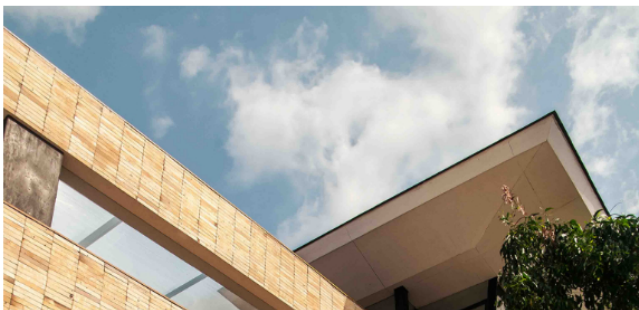
Completed

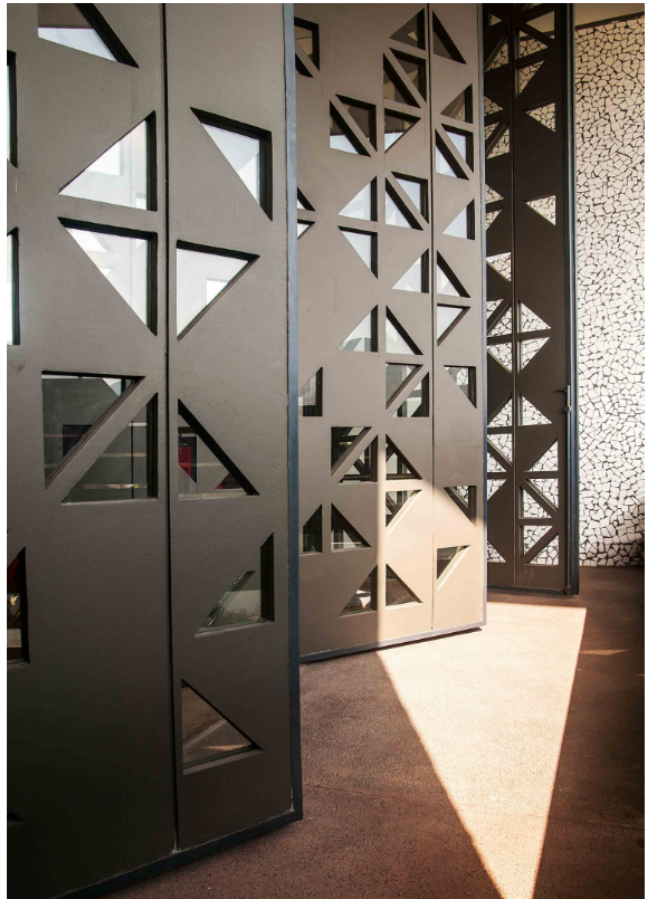
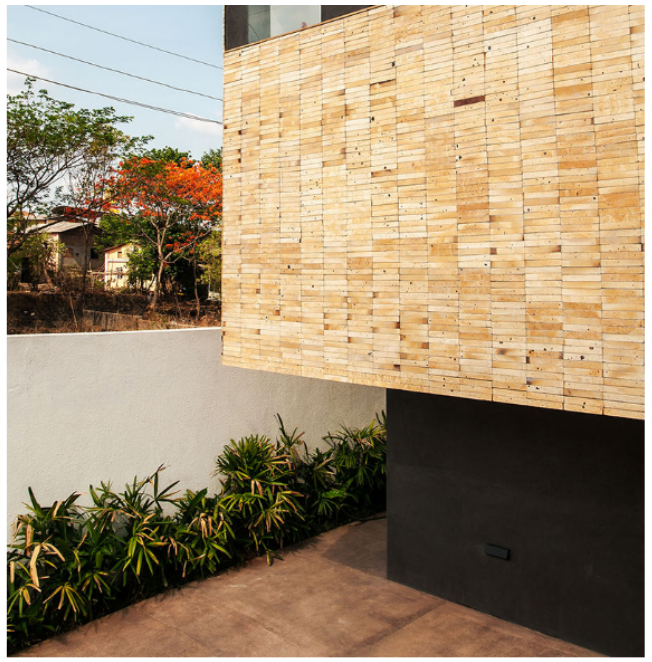
Location

Khopoli, Karjat

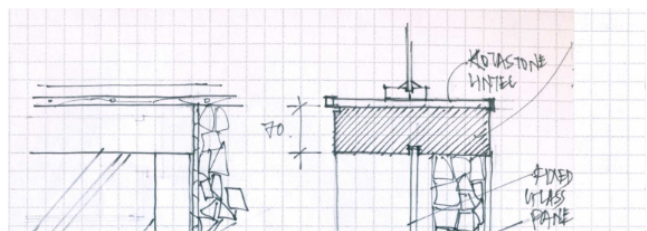
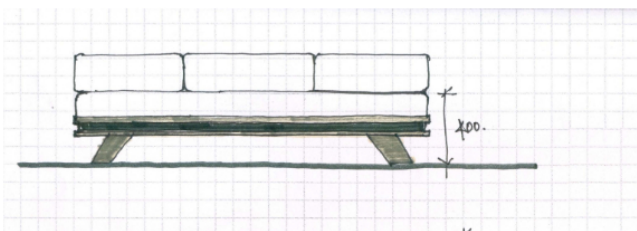
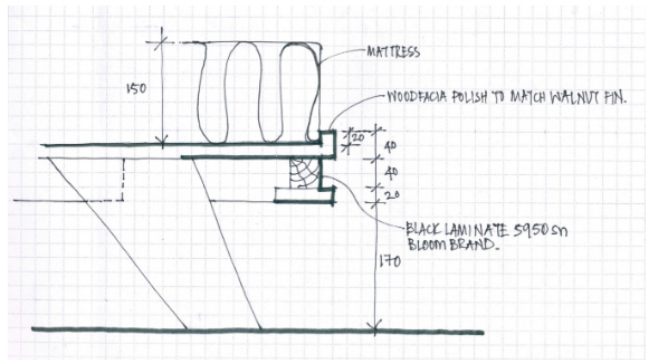
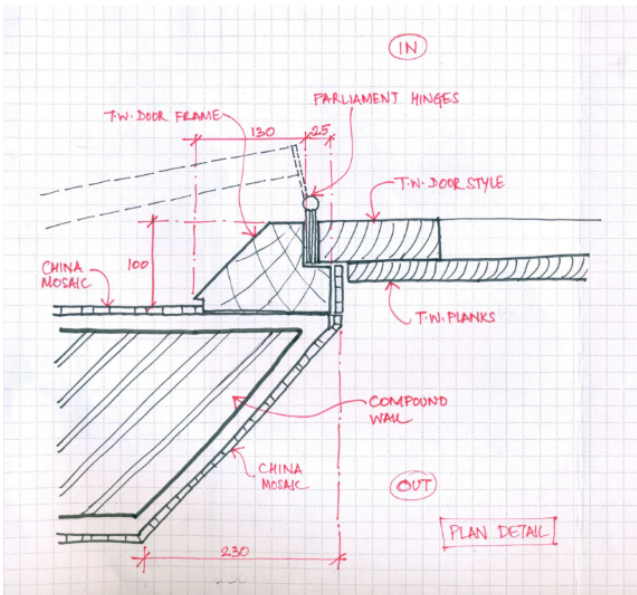
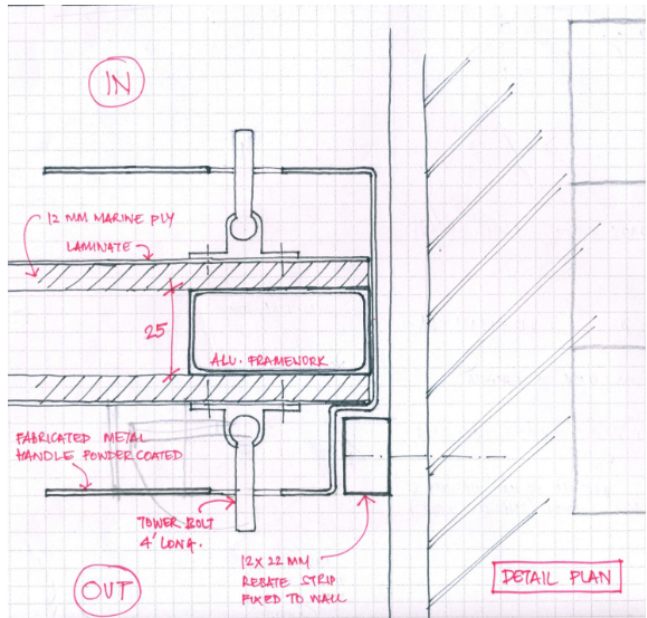
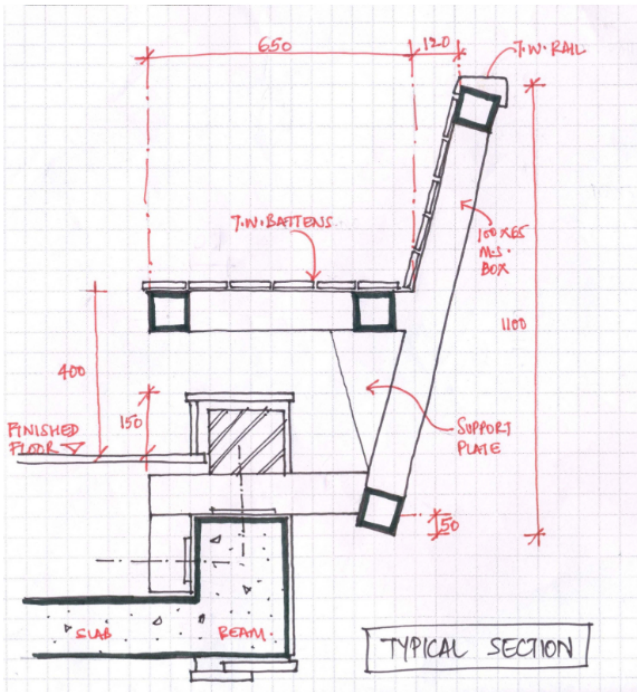
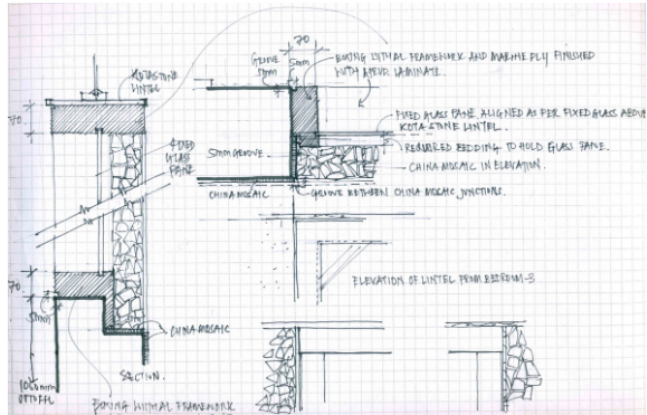
SHARE PROJECT

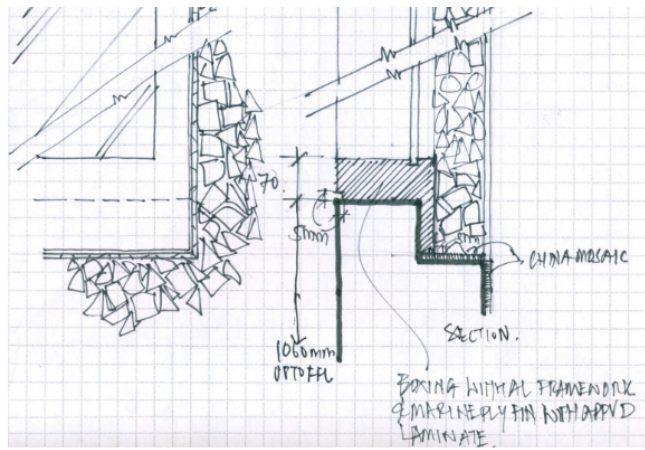
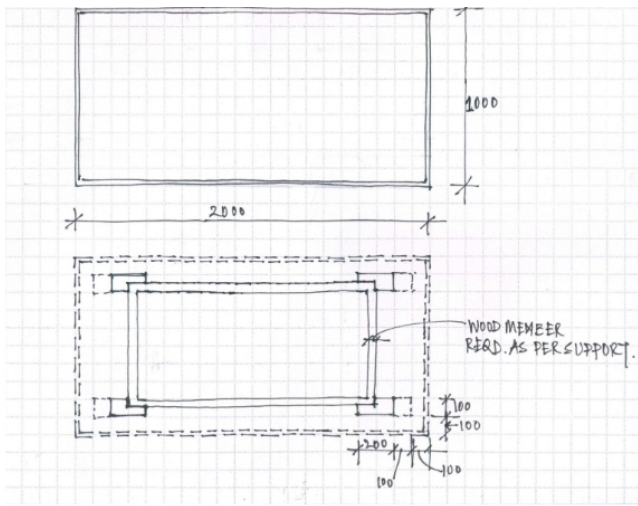












Contact Us

shop no.5, krishna bldg., st. anthony street, kalina, santacruz (e), mumbai – 400 098. | +91 22 6702 4521/ +91 22 6702 4522 | projects@kpa.in